

Keuda

Welcome to Keuda!

17.10.2024

The Campus of Social and Welfare education

Your hosts:

Minna-Maija Bull

- Hair and beauty teacher in Keuda for 15 years
- Finnish as a second language teacher in Keuda since 2024

Outi Kari

- Social care and special education teacher in Keuda for 15 years
- Guidance counsellor in Keuda for 13 years



Topics for your visit

- Presenting Keuda and the Tuusula-campus
- Qualifications
- VET in Finland and reform of VET
- Adult education and migrant education
- Personal plan for studies
- Counseling in adult education



Keuda

Keuda and the Tuusula- campus

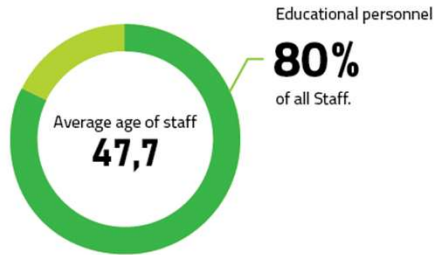
Keuda is 5th biggest VET-provider in Finland

- 10 campuses in 7 towns
- License to provide more than 80 different qualifications

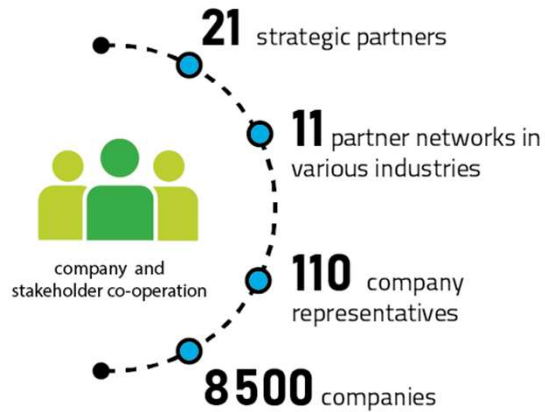
<https://www.keuda.fi/applicant/vocational-upper-secondary-qualifications-at-keuda/?lang=en>



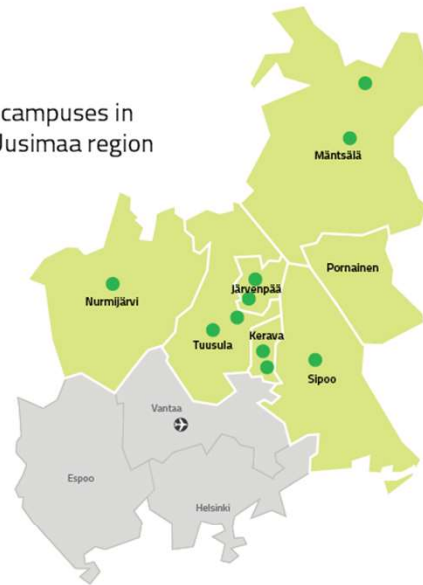
Keuda facts



About **850** employees



10 campuses in Keski-Uusimaa region



+12000

students (year 2023)



Vocational education **11024**

Basic education for adults **188**

Labour policy education **203**

Preparatory education **198**

Liberal adult education **153**

80 vocational studies

77 native languages

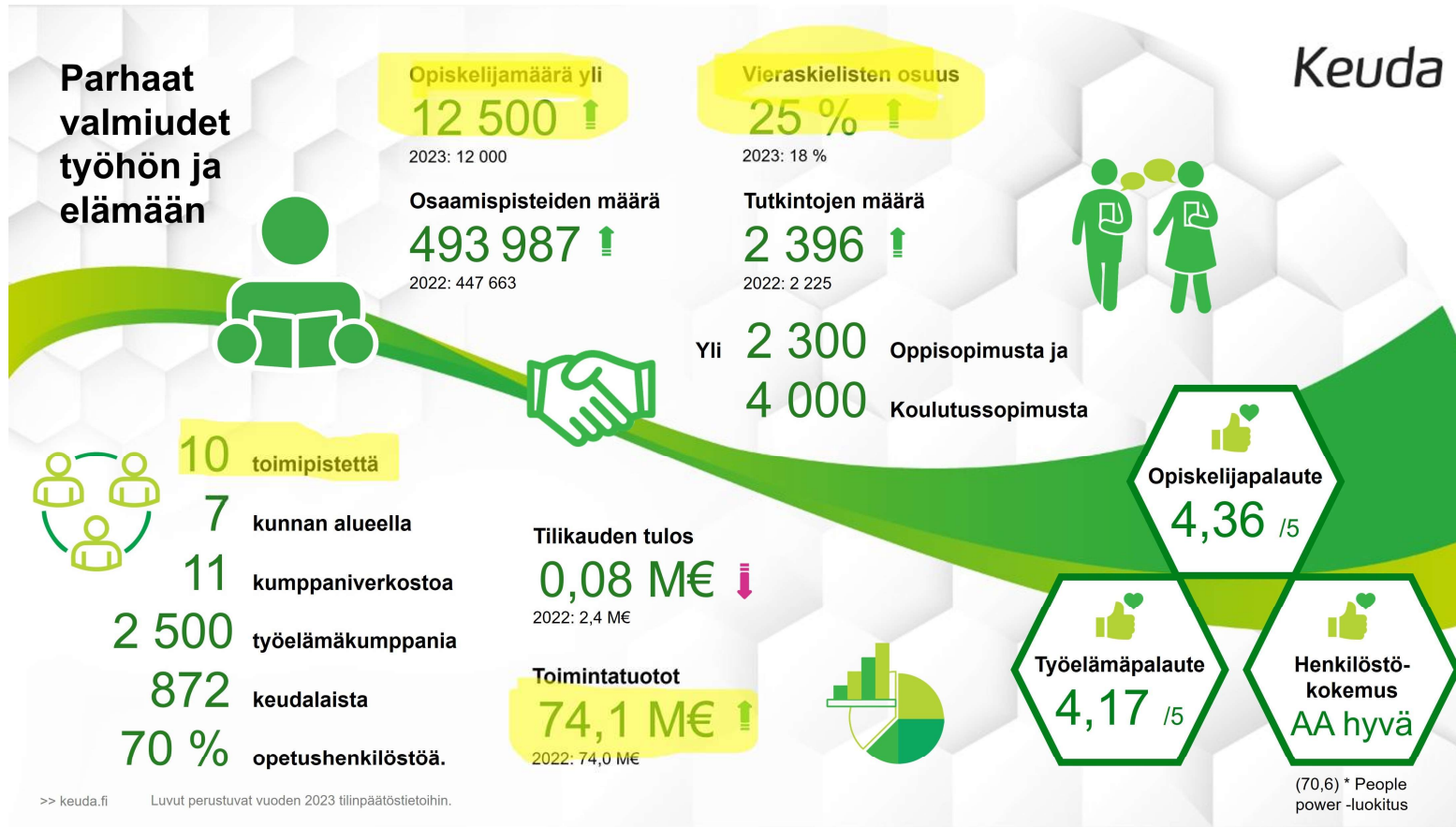
Proportion of foreign speakers **20 %**



1 477 Apprenticeships agreements and **3 486** Training agreements.



Keuda Vocational Education and Training



>> keuda.fi Luvut perustuvat vuoden 2023 tilinpäätöstiietoihin.

Students in Keuda, Tuusula

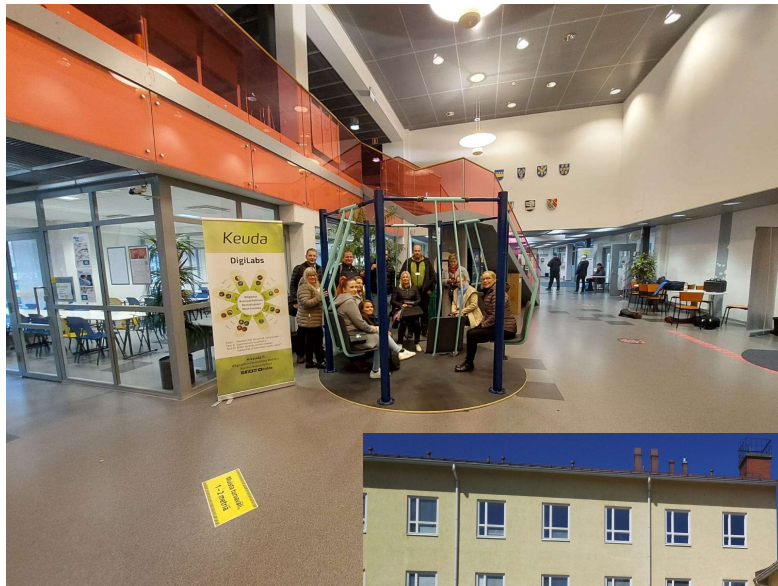
1100 students

- Practical nurse students (550, ca. 50 % are immigrant students)
- Hairdresser or Beautician students (220, ca. 27 % immigrant students)
- Youth and community counsellor or Child care instructor students (330, ca. 27 % immigrant students)

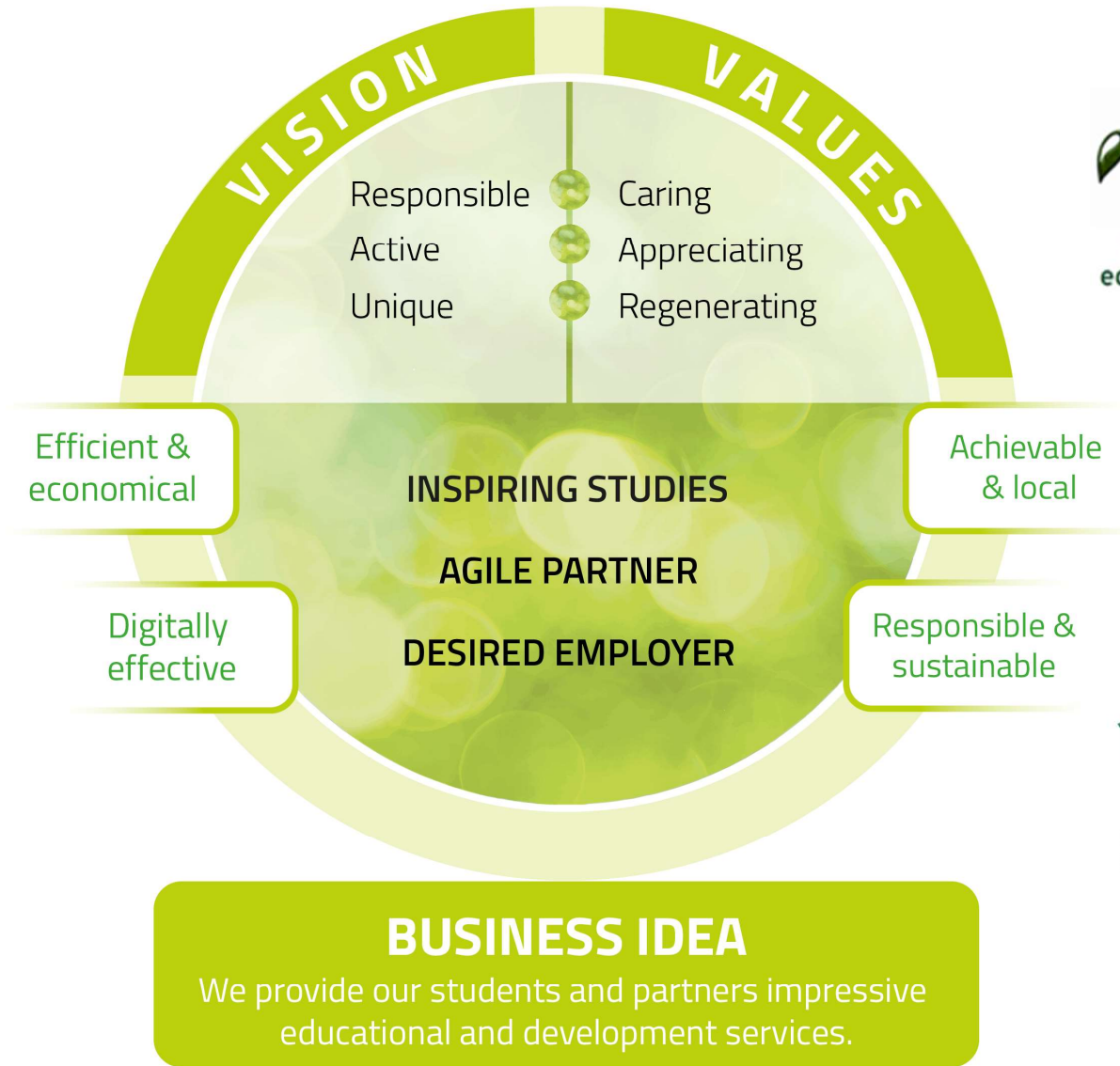
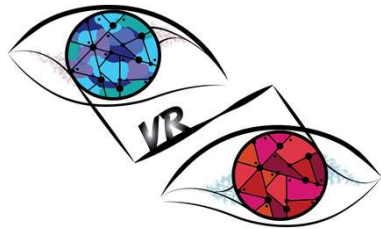
Ages:

- 16-18 years, 25 % of students
- over 50 years, 10 % of students

Some photos of our locations

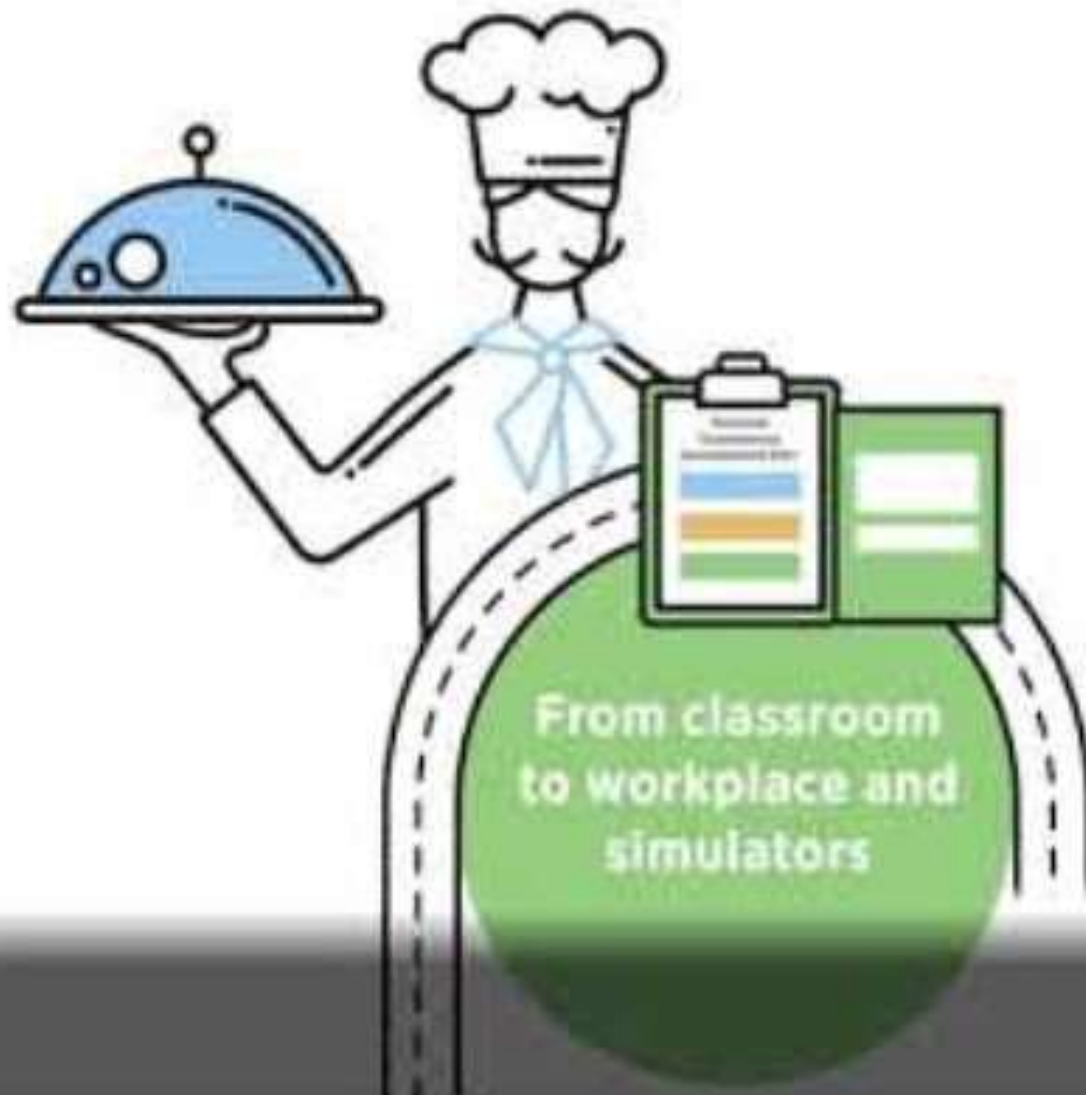


>> keuda.fi
#kestävä
#saavutettava
#uniikki
#omapolku
#työelämävärtten



We are committed to saving natural resources.
We have been granted an EcoCompass Certificate.

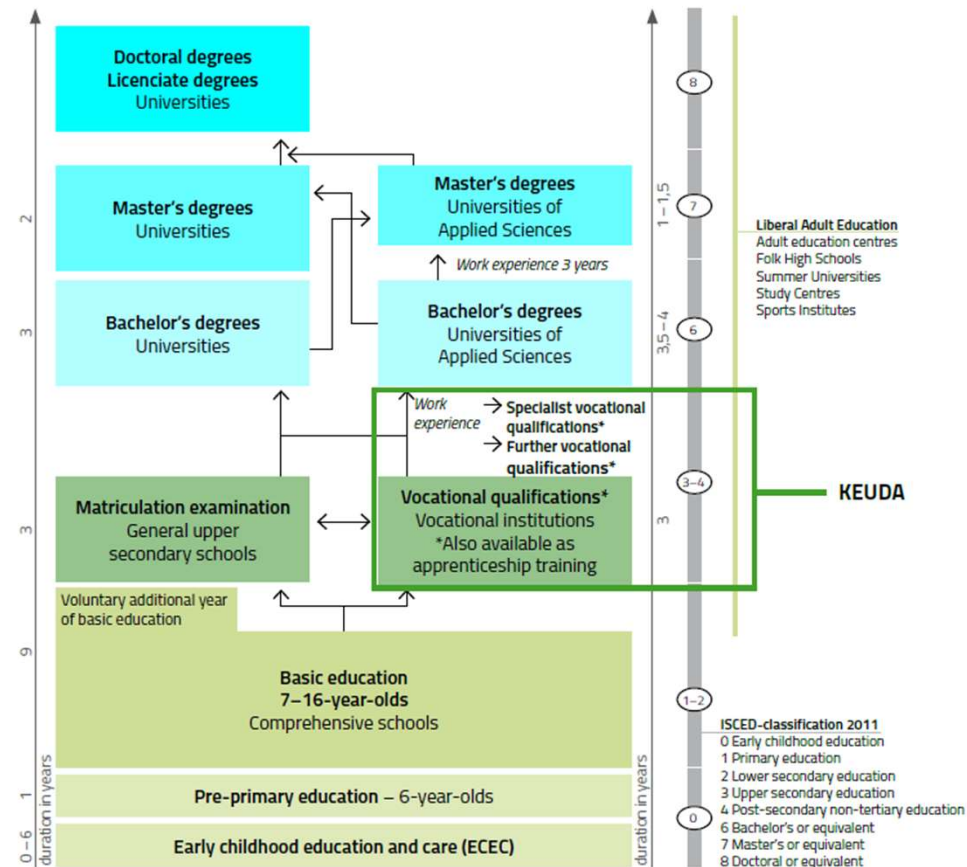
Keuda



Education system in Finland

- Open pathways from VET to further and higher education
- Possibility for double-degrees (Gymnasium + Vocational school)
- Vocational basic qualifications, EQF-level 4
- Further and Specialist Vocational Qualifications, EQF-level 5

Education system in Finland



Learn more: <https://minedu.fi/en/frontpage>

Reform of VET in 2018

- Only one law (1.8.2018)
- The purpose:
 - to maintain people's **vocational skills and competence**
 - to ensure that everyone completes at least an upper secondary qualification.
- VET supports **continuous learning** and students' development as human beings and members of society
- Educational policy objective is to guarantee **equal educational opportunities** for each person
- Finnish vocational education and training is **competence based and student-oriented**

Specific to VET in Finland

- Continuous admission – in Keuda, once a month
- Students learn only what is missing -> **Personal Competence Development Plan** to gain any missing skills
- Study times vary, depending on prior skills
- **Modular, broad qualifications:** study just 1 module, several, or the whole qualification.
- VET qualifications are flexible, they have optional and compulsory modules.



>> keuda.fi

#kestävä #saavutettava #uniikki

#omapolku #työelämävärtten

Specific to VET in Finland

- Learning takes place in all kinds of **learning environments**
- No dead-ends: with a VET-qualification, one can continue studies in Higher Education
- **Competence demonstrations** instead of tests, done in real workinglife situations at the workplace
- VET for re-skilling and upskilling: in Keuda, 70% of learners are adults, and the number is growing
- Strong Student support services



>> keuda.fi

#kestävä #saavutettava #uniikki

#omapolku #työelämävärtten

Funding based on outcomes, efficiency and effectiveness

- Rewards education providers for their outcomes, efficiency and effectiveness of activities.
- The focus is on
 - **completed units and qualifications**
 - **employment or placement in further studies** after the education
 - **feedback** collected from students and working life.
- The time spent in education is not relevant from the point of view of funding

FUNDING SYSTEM FOR VOCATIONAL EDUCATION AND TRAINING

STRATEGY FUNDING
(a maximum of 4% of the total funding)

IMPUTED FUNDING
(a minimum of 96% of the total funding)

70%

CORE FUNDING
- student-years

Creates

- preconditions for the future provision of education in all fields and for all students
- a foreseeable foundation for the provision of education and qualifications

20%

PERFORMANCE-BASED FUNDING
- qualifications and modules

Guides and encourages to

- target education and qualifications in accordance with competence needs
- intensify study processes
- complete qualifications and modules in accordance with the set objectives

10%

EFFECTIVENESS-BASED FUNDING
- access to employment
- further studies
- feedback

Encourages to

- redirect education to fields where labour force is needed
- ensure that education corresponds to the needs of the working life and is of high quality
- provide readiness for further studies

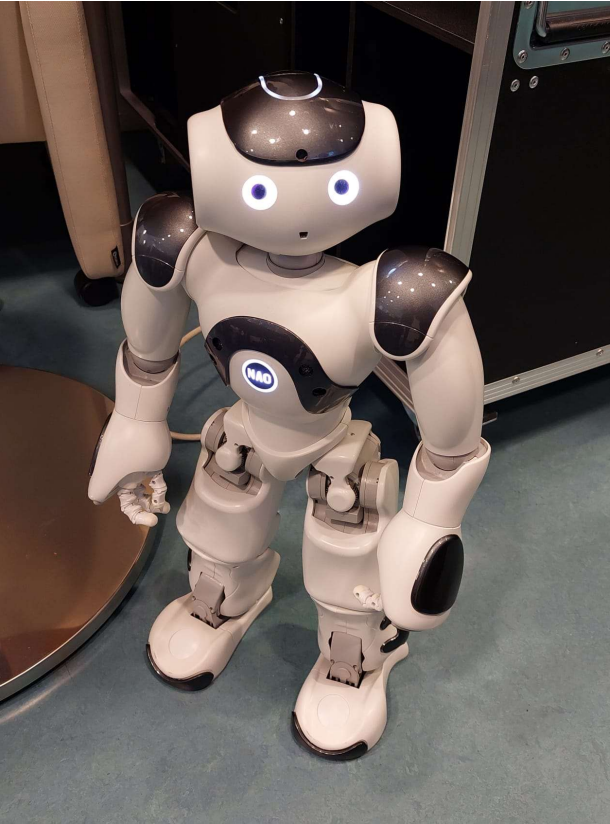
Important points of work life in Finland

- Working life is undergoing **changes**
- New **occupations** keep on emerging and old ones disappear
- **Technology** advances
- Students' needs are becoming more and more **individual**
- Skills need to be **updated** throughout careers

More information:

- https://okm.fi/documents/1410845/4150027/Finnish+VET+in+a+nutshell_2023.pdf
- <https://okm.fi/en/administration-and-finance-vet>
- https://okm.fi/en/policies-and-development_vet
- https://okm.fi/en/qualifications-and-studies_vet

Examples of new technology



>> keuda.fi
#kestävä
#saavutettava
#uniikki
#omapolku
#työelämävärtten



Keuda

[FI-FI | D3118 | Too Many | Kids | Buyer | 16x9 | 6s |.mp4
\(youtube.com\)](#)

Using robots in the personal care (in the video)

Robots can

- Guide gymnastics to the patients
- Share the medicine
- Help in the personal care (dressing, eating...)

How the educational reform has changed the daily work of teachers

Education for the immigrants and adults

Students selections (continuous admission):

- Continuous application (24/7)
- Teacher interview and language test
- Second level degree: finnish language skills must be B1.1.-level (functional basic language skill)
- Partial degree: finnish language skills must be A2.2.-level (developing basic language skill)

Working with immigrants

- Students are motivated and appreciate the education
- Important that teachers have personal interaction with the students
- Speaking, writing and listening in Finnish practices
- Multicultural perspective
- Skill learning (like hairdressing) is easier for the students than theoretical studies
- Support for the work experience periods (teachers and instructors help)

Personalised learning plans

- Personal interview at the beginning and throughout the studies

Which includes:

- Needs for support
- Personal interests
- Identification of prior learning: working experience, previous studies
- Curriculum
- Career plan

Studenta- student information system

[HOKSin perustiedot - StudentaPlus \(solenovo.fi\)](#)

Student support staff in Keuda

- Special education teachers
- Supporting counsellors
- Guidance counsellors
- Professional craftsmen
- Student support services
 - healthcare
 - social worker
 - psychologist
- **Keudaattori**, a support workshop (six instructors, teachers, special needs teachers)
- Medicine calculation workshop
- Job search workshop
- Multiprofessional group support

All the support behind "just one door"



>> keuda.fi
#kestävä
#saavutettava
#uniikki
#omapolku
#työelämävärtten

17.10.2024

Keudaattori -service

- An open learning environment for all students
- General support and special support
- Open from 8.30 am. till 3 pm.
- 1-3 supporting counsellors
- General studies teachers according to a schedule
- Special education teachers when available

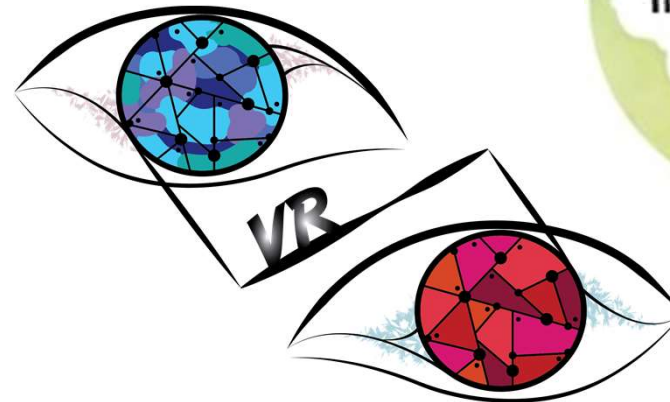


How to minimise dropout rates

- Recognizing the language skills during applying
- Observing students' life management skills
- Recognizing individual support needs and giving support
- If the language skills don't develop during studies, the guidance councillor guides to others paths: adult basic education, pre degree education, parts of the degree or more practical studies, like care assistant, catering, cleaning, logistics, gardening
- The dropout is common in Keuda (dropout percent is ca 30)

International Keuda

- 3 full time staff members
- 24 student mobility contact persons
- ~ 40 partners in 17 countries
- physical and hybrid mobility
- Visitors, guests, jobshadowing, workshops, network



>> keuda.fi
#kestävä #saavutettava #uniikki
#omapolku #työelämävärtten

Keuda

Hvala!
Kiitos!

Thank you & welcome back :-)

Contact:
Ms Katriina Lammi
Head of International Affairs
katriina.lammi@keuda.fi
[@keudainternational](#)



www.keuda.fi
Instagram: [@Keudainternational](#),
[@keuda_ammattiin](#)